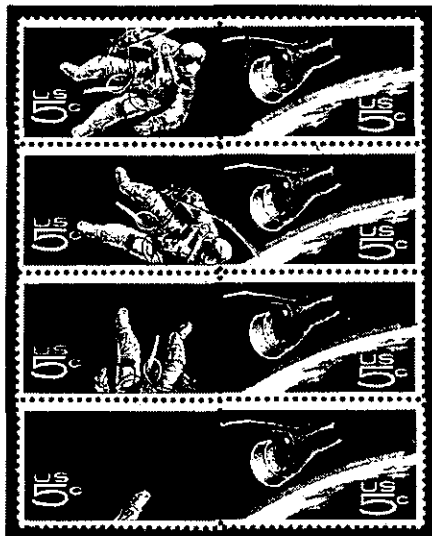


Anyone can get
 Amazing prices for Amazing stamps.
 But how do you get the best price for
 ALL your stamps?



Amazing Color Shift

The "broken teather" plate flaw which developed near the top of this sheet resulted in a rather disastrous color shift.

Inspired by our 3rd contest winner, J.N. of Brooklyn, N.Y.

You may have some amazing stamps. But what about the rest of the stamps in your album? ...And what about the cigar box filled with recent plate blocks? ...And then there's the stockbook crammed with duplicates! ...And then....?!!

For 43 years we at Matthew Bennett, Inc. have been helping thousands of collectors like yourself realize the best price for their stamps. Bennett's large international clientele assures you of an eager market for every part of your collection. Whether you sell directly to us or through one of our public auctions, you will get best price for your entire collection.

If your holdings are substantial, we will visit you at the location of your choice. For an even quicker response, or for a smaller collection, you can have your stamps both packed and shipped to us at our expense!

So to get the best price for *all your stamps*.

Call Bennetts today!

Toll-free: 1-800-638-4223

Matthew Bennett
 inc.
 Buyers of Important Collections for Two Generations

31 W. Chesapeake Ave.
 Baltimore, MD 21204

I wish to sell my collection consisting of:

Approx. catalog value _____

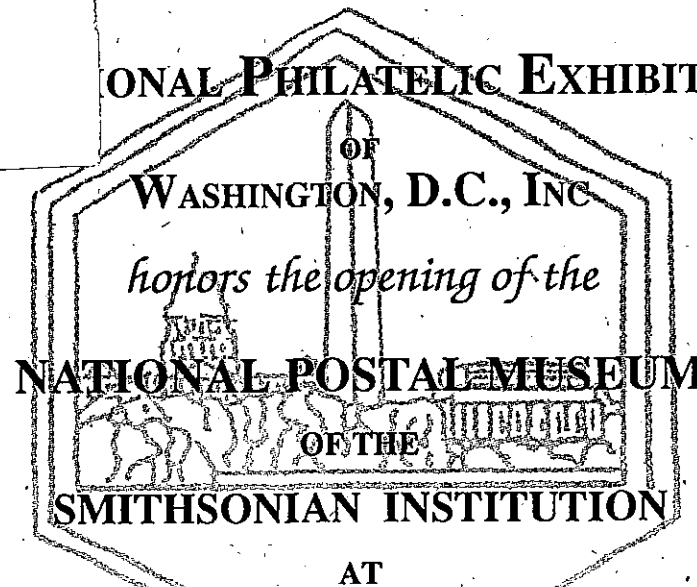
Name _____

Address _____

Phone (_____) _____

We hope you are enjoying our "Amazing Stamps." The stamps are actually fanciful creations of our art department. The point we are trying to make is: When you want real prices for real stamps Call Bennetts.

HE
 6191
 N108
 1993
 NPM



NAPEX 93

June 4, 5 & 6, 1993 ♦ Sheraton National Hotel, Arlington, Virginia



NAPEX 93 is pleased to acknowledge the active participation of our guests—the many regional, national and international societies.



Please meet **OWNEY**—sitting atop a mail bag and wearing his own special tag which reads: **OWNEY, POST OFFICE, ALBANY, NY—the mascot of the Railway Mail Service.** Owney traveled on RPO routes all over the U. S. to Canada and Mexico and later to China, Japan, Singapore, Suez, Algiers and the Azores. He traveled the rails from 1888 until he died June 11, 1897.

You can visit "Owney" at the new National Postal Museum!

NEXT YEAR NAPEX 94—Our guests will include

- COPAPHIL (biennial meeting)
- India Study Circle (meeting)
- Italy & Colonies Study Group (annual convention)
- Nepal/Tibet Philatelic Study Circle (annual convention)
- Society of Indochin Philatelists (annual Convention)

THIS YEAR NAPEX 93—Our guests include



- The Royal Philatelic Society, London
- The China Stamp Society
- Rossica Philatelic Society
- Society of Israel Philatelists
- International Philippine Philatelic Society

NAPEX 93 Reception & Information Desk
is located in the Exhibition Lobby
 and HAS FOR SALE . . .

NAPEX 93 official PROGRAM-CATALOG, unserviced.....	\$.50
Serviced with NAPEX SHOW CANCEL for opening day.....	1.50
Serviced with NAPEX SHOW CANCEL, one for each show day (set of three).....	3.50
NAPEX 93 Souvenir Card No.7, unserviced (mint), with envelope and protective tissue.....	3.00
Serviced with opening day cancel, with envelope and protective tissue.....	4.00
NAPEX 93 cachets, unserviced, three issued—different design and different color for each day of show.....each	.50
Unserved, set of three.....	1.25
Serviced.....each	1.00
Serviced, set of three, one for each day of show.....	3.50

Cachets, souvenir cards and programs from previous NAPEX shows
are available in a limited number at the NAPEX sales desk.

Mail Orders for all the above items will be accepted until supplies are
exhausted. Mail your order to—

NAPEX 93, P.O. Box 4510, Arlington, VA 22204-0510

Welcome to NAPEX 93

NAPEX L. W. DRAEGER, Vice President—2409 N. MILITARY ROAD., ARLINGTON, VA 22207
 Phone: 703-525-1437 National Philatelic Exhibitions of Washington, D.C., Incorporated

Dear Visitor:

June 4, 1993

Our President, Milton Mitchell, became seriously ill at home on January 17, 1993. He is now undergoing therapy, is responding well and could be home within the next several weeks.

He has asked me to extend his greetings to all of you and his regrets that he is not able to meet you in person.

NAPEX 93 this year is most unusual: We are pleased to announce the participation of the National Postal Museum of the Smithsonian Institution which officially will open to the public in July 1993. However, each afternoon our visitors can travel by special bus to the National Postal Museum (located adjacent to Union Station) for a special guided tour and then back to NAPEX. This year we have in competition 288 frames of material, including a special section of one-frame exhibits from members of The Royal Philatelic Society, London. This society in addition to The China Stamp Society, the Rossica Philatelic Society, the Society of Israel Philatelists and the International Philippine Philatelic Society are but some of the many societies with meetings, seminars and lectures scheduled during NAPEX.

You will find a bourse of 54 dealers from all over the United States, some as far away as California and the state of Washington; there are three dealers from London.

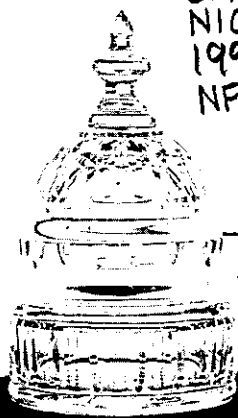
The U.S. Postal Service will have the special NAPEX post office in operation canceling material with the NAPEX 22210 show cancel. A different cachet will be available for each of the three days of the show along with Souvenir Card Number 7 and a 24-page separate-cover program-booklet. The Awards Banquet Saturday evening will again have a special limited-edition-numbered-in-sequence keepsake available to those attending the banquet, and—our usual gourmet dinner will be served, after which the NAPEX and society awards will be presented.

Milton and I along with the other officers and directors of NAPEX again extend a cordial welcome to each of you and sincerely hope your visit with us will be enjoyable and useful.

Sincerely,

Lawrence W. Draeger
 Lawrence W. Draeger,
 Vice President, NAPEX

ANON. CLET TO SIL 08-98



HE
6191
N108
1993
NPM

NAPEX 93 Awards

Grand Award—BEST IN SHOW

(Receives Waterford crystal 2-piece "biscuit barrel"
patterned after our nation's Capitol)

Reserve Grand Award—SECOND BEST IN SHOW

(Receives Waterford crystal paper-weight
patterned after our nation's Capitol)

NAPEX special award to Royal Society winner

The NAPEX annual stamp exhibition has been designated a *National* show; therefore the Grand Award winner is invited to participate in the *Champion of Champions* yearly competition held by the American Philatelic Society (APS).

NAPEX Medals—Five levels: Gold, vermeil, silver, silver-bronze and bronze

are awarded on an Open Show Basis without regard to classification or the various society awards.

The winners of the Grand Award and Reserve Grand Award not only receive engraved gold medals but also appropriate trophies.

SOCIETY AWARDS

- AMERICAN PHILATELIC SOCIETY MEDALS
- CHINA STAMP SOCIETY AWARDS
- ROSSICA SOCIETY OF RUSSIAN PHILATELY AWARDS
- ROYAL PHILATELIC SOCIETY, LONDON AWARDS
- SOCIETY OF ISRAEL PHILATELISTS AWARDS
- BUREAU ISSUES ASSOCIATION AWARDS
- POSTAL HISTORY SOCIETY AWARD
- AMERICAN AIR MAIL SOCIETY AWARD
- AMERICAN TOPICAL ASSOCIATION AWARDS
- UNITED POSTAL STATIONERY AWARD
- MICHAEL ROGERS BEST ASIA AWARD
- GREAT BRITAIN AWARD
- RYUKYU PHILATELIC SPECIALITY SOCIETY AWARD
- U.S. PHILATELIC CLASSICS SOCIETY AWARD
- INDIA STUDY CIRCLE FOR PHILATELY AWARDS
- U.S. CANCELLATION CLUB AWARD
- AMERICAN ASSOCIATION OF PHILATELIC EXHIBITORS AWARDS

The NATIONAL POSTAL MUSEUM

OF THE

SMITHSONIAN INSTITUTION

AUG 18 2000

LIBRARIES

A NEW SMITHSONIAN INSTITUTION MUSEUM,
the NATIONAL POSTAL MUSEUM,
will open in WASHINGTON, D.C., in JULY 1993.

THE MUSEUM WILL BE HOUSED in the historic Washington City Post Office which is located on Capitol Hill next to Union Station. The building was designed by the prominent architect Daniel Burnham. Construction of the building began in 1914 on a site at the intersection of Massachusetts Avenue and North Capitol Street. Noted for its classic architectural qualities, the building has been completely restored and renovated.

THE BUILDING ENCOMPASSES 1.5 million square feet of space. The museum will occupy 87,000 square feet with 32,000 feet of exhibition space and 6,000 square feet devoted to a research library. Included in the exhibition space is the building's 90-foot atrium which will allow the display of larger vehicles and airplanes used in the postal system. The museum's facilities also include space for research, educational programs, classroom, curatorial and other staff as well as storage space.

THE NATIONAL POSTAL MUSEUM WILL EMPHASIZE A MULTIFACETED MISSION WHICH INCLUDES:

1. Portraying the important role which the postal system played in building and unifying the nation;
2. Promoting an understanding of the rapidly changing postal technology and operation;
3. Educating the public about the role of postal automation;
4. Preserving the Smithsonian's national postal history and philatelic collection (the most important and comprehensive collection in the world);
5. Acting as official repository for museum collections associated with the United States Postal Service;
6. Fostering scholarship through the use of the extensive collections and philatelic research library;
7. Promoting postal history and philately through diverse public programs, exhibitions and educational activities;
8. Encouraging and serving new stamp collectors; and
9. Fostering international understanding and cooperation.

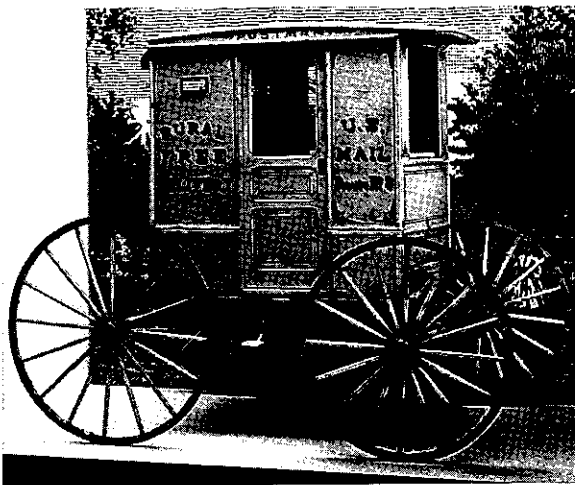
THE NATIONAL POSTAGE STAMP COLLECTION was begun in 1886 with the donation of the 10-cent Confederate postage stamps. The present collection consists of over 16 million items which came to the Smithsonian through gifts from individuals, transfer from U.S. government agencies, from foreign governments and occasional purchases.

From 1908 to 1968 the National Postage Stamp Collection was exhibited in the Arts and Industries Building. In 1964 the collection was moved to the then new National Museum of American History.

In its new location after 1964, the exhibits were expanded to include postal history and stamp production. Until the opening of the National Postal Museum, the Smithsonian had been able to display only a very small portion of its postal history and stamp collection. The new museum will have an exhibition area nearly five times greater than the space which had been previously occupied.

THE RESEARCH CENTER in the new National Postal Museum will be devoted to the understanding and enjoyment of stamp collecting and the study of postal history. The Center will house the most extensive and important postal and philatelic research facility of its kind in the world. The Center will revolve around the library whose collection of literature and research holdings is estimated to include in excess of 140,000 reference works, 10,000 illustrations and thousands of files pertaining to postal operations and philately.

The Research Center will focus on providing a complete research environment. The Museum's curatorial and research staff will serve visiting scholars and private citizens who wish to conduct studies as well as their own in-house research and projects. The library will be open to the public by appointment. Library materials will be available on inter-library loan so that scholars around the country will have access to books and periodicals.



THREE TYPES OF EXHIBITS are planned for the public areas of the Museum: *Continuing installations, temporary exhibits and circulating exhibits.* Galleries will present information in an entertaining and educational manner which documents significant historic themes, displays postal artifacts and initiates active visitor participation. The planned exhibits will trace the history of America's postal system from colonial times, with emphasis on mail as a method of communication and on the impact which the postal system has had on individuals and in the growth of our nation.

Compiled by: SEYMOUR B. STISS *who drew liberally on the writings and brochures written by the National Postal Museum Staff.*

NAPEX 93 is pleased to honor the new National Postal Museum and has done so by publishing a cacheted envelope, an opening-day cancellation, a souvenir card, the limited-edition keepsake available at the Awards' Banquet and in this show program-booklet.

We pledge our continued support to a new and wonderful asset of the philatelic community.

The Japanese Philately Exhibit on view in Concourse Room 2 is a preview of the panel show sponsored by the Embassy of Japan and the Washington Chapter of the International Society for Japanese Philately (ISJP).

The Japanese Postal Ministry has shipped 120 special exhibition panels to Washington, the first time they will be seen outside Japan. The panels show various kinds of Japanese postage stamps, old and new, with their historical and cultural settings, but also demonstrate printing methods and other topics associated with philately. Themes of the panels which will be displayed include National Treasures on stamps, modern paintings and woodblock prints (*nishiki-e*) on stamps, and the Nature Conservation Series. The panels are mounted in aluminum frames. After the two Washington showings, they will be available for exhibition use throughout the United States.

*The NAPEX 93 annual meeting will be held
Saturday, June 5, at 4 pm in Concourse Room 1
Light refreshments will be served*

OFFICERS

Milton Mitchell.....President
Lawrence W. Draeger.....Vice-President
George S. MansfieldSecretary
Gerhard S. Wolff.....Treasurer
Stephen Luster.....Director
Douglas K. Lehmann.....Director
Ralph Sigler.....Director
Seymour Stiss.....Director
Michael D. Dixon.....Director

COMMITTEES

General Chairman.....Stephen Luster
Deputy Chairman.....Douglas K. Lehmann
Exhibits-Selection.....Michael D. Dixon
Exhibits-Mounting.....Richard W. Wrona
Finance.....Gerhard S. Wolff
Floor Manager & Security.....Ralph Sigler
Dealer Bourse.....Ralph Sigler
Judges.....Milton Mitchell
Jury Secretary & Awards.....Seymour B. Stiss
Typography & Design.....L. W. (Bill) Draeger
Sales.....George S. Mansfield
Publicity & Advertising.....Douglas K. Lehmann
Social Coordinators.....Diana Wolff & Marion Mitchell
Society Coordinator.....Barbara Fraize

JUDGES

Jury Chairman: Mr. John O. Griffiths, RDP, Aylesbury, England
Jury Members: Mrs. Joan R. Bleakley, Woodbridge, Virginia
Mr. L. D. Mayo, Indianapolis, Indiana
Mr. Michael E. Ruggiero, Brooklyn, New York
Mr. Gordon H. Torrey, Bethesda, Maryland
Mr. Norman Townsend, Windsor, Ohio
Mr. Morris Rosen, Baltimore, Maryland
Apprentices: Mr. Leroy Collins, Norfolk, Virginia
Mr. John C. Olson, Orlando, Florida
THE ROYAL PHILATELIC SOCIETY, LONDON—
One-frame competition:
Chairman: Mr. John O. Griffiths, RDP, Aylesbury, England
Mr. W. Danforth Walker, Lisbon, Maryland



*Schedule
OF
EVENTS*

Thursday, June 3, 1993

10 am to 9 pm Matthew Bennett, Inc., *Public Auction Viewing*
Mezzanine Room 4

• • •
Friday, June 4, 1993

10 am *The cutting of the coil* by Milton Mitchell
Exhibition and Bourse Open

10 am to 7 pm International Society for Japanese Philately Exhibit
Concourse Room 2

10 am to 7 pm Smithsonian Institution/National Postal Museum Exhibit
Cavaller Room A

10 am to 9 pm Matthew Bennett, Inc., *Public Auction Viewing*
Mezzanine Room 4

12 noon to 4 pm Matthew Bennett, Inc., *Public Auction, Session I*
(*British Empire and other foreign*)
Concourse Room 1

3 pm to 5:30 pm Bus loads for preview tour of the National Postal Museum—
(*Please register at NAPEX Information Desk*)
Bus leaves from Hotel Front Entrance

7 pm Exhibition and Bourse Close

8 pm Society of Israel Philatelists—
Directors' Meeting/Reception
Concourse Room 1

NAPEX 93 — Schedule of Events

Saturday, June 5, 1993

- 8:45 am to 10 am Rossica Philatelic Society — *Officers' Meeting*
East Room 2
- 9 am to 12 noon China Stamp Society — *Directors' Meeting*
Mezzanine Room 3
- 9 am to 12:30 pm Society of Israel Philatelists House of Delegates/World
Philatelic Congress—*Meeting*
Concourse Room 1
- 10 am Exhibition and Bourse Open
- 10 am to 12 noon East Coast Exhibit Chairmen — *Meeting*
East Room 2
- 10 am to 12 noon James Hoban Chapter, Eire Philatelic Society — *Meeting*
East Room 3
- 10 am to 6 pm International Society for Japanese Philately *Exhibit*
Concourse Room 2
- 10 am to 6 pm Smithsonian Institution/National Postal Museum *Exhibit*
Cavalier Room A
- 10 am to 9 pm Matthew Bennett, Inc., *Public Auction Viewing*
Mezzanine Room 4
- 11 am to 12 noon British North American Philatelic Society — *Meeting*
Also—*Members' Presentation: My Most Intriguing*
Philatelic Item. East Room 1
- 12:30pm China Stamp Society—*Members' Luncheon*
Hsian Foong Restaurant,
2919 N. Washington Blvd, Arlington, VA
- 1 pm to 2 pm Korean Stamp Society — *Meeting*
East Room 2

The China Stamp Society will sponsor the Directorate General of Post, Taiwan, Republic of China who will have a 2-frame exhibit plus a booth. Visit the booth and view an unusual exhibit and receive a free cachet cover.

NAPEX 93—Schedule of Events

Saturday, June 5—Continued

- 1 pm to 2 pm Souvenir Card Collectors Society — *Meeting*
Bureau of Engraving and Printing 1933-94 Souvenir Card
Program: Leah Akbar, *Speaker*
East Room 3
- 1 pm to 2:30 pm Society of Israel Philatelists — *Lecture—The Interim Period,*
Slide Presentation: Dr. Robert Pildes, *Speaker*
Concourse Room 1
- 1 pm to 3:30 pm Rossica Philatelic Society — *Meeting*
Russian Offices Abroad, Gordon Torrey, Speaker
Soviet Air Mail, G. Adolph Ackerman, Speaker
East Room 1
- 2 pm to 3 pm Europa Study Unit — *Meeting—Stephen Luster, Presiding*
East Room 2
- 2 pm to 3 pm Great Britain Collectors Club — *Open Meeting*
Mezzanine Room 3
- 2 pm to 3 pm Scandinavian Collectors Club—*Meeting*
East Room 3
- 2:30 to 3:30pm East Africa Study Circle/American Belgian Philatelic Society
Meeting —World War I East Africa, Slide Presentation,
Concourse Room 1
- 3 pm to 4 pm Virginia Philatelic Federation— *Meeting*
East Room 2
- 3 pm to 5 pm China Stamp Society— *Meeting*
Mezzanine Room 3
- 3 pm to 5 pm Fine Arts Philatelists—*Meeting—Triennial Election of Officers*
East Room 3
- 3 pm to 5:30 pm Bus loads for preview tour of the National Postal Museum—
(Please register at NAPEX Information Desk)
Bus leaves from Hotel Front Entrance

All Junior Collectors (and senior collectors interested in special activities for young collectors) are invited to visit the Youth Activities area located in the room directly in back of the United States Post Office.

NAPEX 93—Schedule of Events

Saturday, June 5—Continued

- 3:30 pm to 5:30 U.S. Possessions Philatelic Society—*Regional Meeting*
East Room 1
- 4 pm to 6 pm NAPEX Annual General Meeting
(Light refreshments will be served)
Concourse Room 1
- 6 pm Rossica Philatelic Society — *Social Hour*
East Room 2
- 6 pm Exhibition and Bourse Close
- 6:30 pm Social hour preceding banquet
(Dutch treat—cash bar)

7:30 pm NAPEX 93 AWARDS BANQUET
The Galaxy Room

The Japanese Postal Ministry Exhibit in
Concourse Room 2
is sponsored by the
International Society for Japanese Philately
in cooperation with the
Embassy of Japan.

This is a preview of 120 panels
exhibited for the first time outside of Japan.
The panels show various kinds of Japanese postage stamps,
old and new, with their historical and cultural settings,
but also demonstrate printing methods such as
woodblock printing (*nishiki-e*).

After this premier showing this exhibit
will go on tour in the United States.

NAPEX 93—Schedule of Events

Sunday, June 6, 1993

- 10 am Exhibition and Bourse Open
- 10 am to 11 am American Association of Philatelic Exhibitors—*Meeting*
An AAPE Exhibiting Seminar, Harry Meier, Presiding
East Room 1
- 10 am to 4 pm International Society for Japanese Philately *Exhibit*
Concourse Room 2
- 10 am to 4 pm Smithsonian Institution/National Postal Museum *Exhibit*
Cavalier Room A
- 10 am to 5 pm Matthew Bennett, Inc., *Public Auction Viewing*
Mezzanine Room 4
- 11 am to 12 noon Judges' Critique—John O. Griffiths, *Chief Judge*
East Room 1
- 12 noon to 3 pm International Philippines Philatelic Society—*Meeting*
The Customs Stamps of the Philippine Islands,
Donn Lueck, *Speaker*
(Followed by Social Hour at 1:30)
East Room 3
- 12 noon to 5 pm Matthew Bennett, Inc., *Public Auction, Session II*
(138 accumulations and collections plus U.S.)
Concourse Room 1
- 1 pm to 2 pm Ryukyu Philatelic Society—*Meeting*
Mezzanine Room 3
- 3 pm to 5:30 pm Bus loads for preview tour of the National Postal Museum
(Please register at NAPEX Information Desk)
Bus leaves from Hotel Front Entrance
- 4 pm NAPEX 93—Exhibition and Bourse Close

NAPEX 93 ♦ Bourse showing Dealer Specialties and Booth

AIRMAIL

- 11. PRINCETON PHILATELICS, Tappan, NY
- 55. J. S. VOLUTZA PHILATELICS, Mt. Penn, PA

AMERICANA

- 20. THE FOLDED LETTER, Lafayette Hill, PA

BOOKLETS

- 2. ALAN LIPKIN STAMP CO., Petaluma, CA
- 7. SCOJO STAMPS, Ridgely, MD
- 13. JOY COVERS & STAMPS, Charlotte Hall, MD
- 33. VICTOR B. KRIEVINS, Bryn Mawr, PA

BRITISH EMPIRE

- 2. ALAN LIPKIN STAMP CO., Petaluma, CA
- 3. MOUNTAINSIDE STAMPS, Mountainside, NJ
- 6. VICTORIA STAMP CO., Ridgewood, NJ
- 7. SCOJO STAMPS, Ridgely, MD
- 9. JOHN B. WHALEN, Crofton, MD
- 16. CLASSIC COLLECTOR, Ottawa, Ont. Canada
- 27. GALLEON PHILATELISTS, Gloucester, VA
- 42. RITCHIE BODILY, London NW3 5LS England
- 53. R. W. R. QUALITY STAMPS, Merrifield, VA
- 38. LEBANON STAMP SHOP, Lebanon, PA
- 50. STAMP KING, Chicago, IL

CANADA

- 3. MOUNTAINSIDE STAMPS, Mountainside, NJ
- 23. GARY HOECKER, Portland, OR

CHINA

- 21. MICHAEL ROGERS, Winter Park, FL
- 31. M & W BROOKS, Riverdale, NY
- 40. PHILATELIC CONSULTANTS, Darien, GA

CINDERELLAS

- 30. HARRIS & HARRIS, Baltimore, MD
- 22. RIGASTAMPS, Eaton, OH

CLASSIC

- 15. THOMAS P. SINGER, San Rafael, CA
- 11. PRINCETON PHILATELICS, Tappan, NY
- 16. CLASSIC COLLECTOR, Ottawa, Ontario
- 23. GARY HOECKER, Portland, OR
- 29. RICHARD CHAMPAGNE, Newton, MA
- 33. VICTOR B. KRIEVINS, Bryn Mawr, PA
- 8. EDWARD HINES, Danbury, CT

COILS

- 13. JOY COVERS & STAMPS, Charlotte Hall, MD
- ## COVERS
- 19. JOHN CHOVAN, Camden, DE
 - 9. JOHN B. WHALEN, Crofton, MD
 - 12. H. & M. COVERS, Bowie, MD
 - 13. JOY COVERS & STAMPS, Charlotte Hall, MD
 - 14. DAVE ALLEGO, Ambridge, PA
 - 20. THE FOLDED LETTER, Lafayette Hill, PA
 - 29. RICHARD CHAMPAGNE, Newton, MA
 - 33. VICTOR B. KRIEVINS, Bryn Mawr, PA
 - 36. GENE SCHRIER COVERS, Fairfield, NJ
 - 45. POSTAL HISTORY INTERNATIONAL, Burlington, NC
 - 52. MILLS PHILATELICS, Rexford, NY

EUROPA

- 13. JOY COVERS & STAMPS, Charlotte Hall, MD
- 54. GAREL INDUSTRIES, INC., Hewlett, NY

FREAKS & ERRORS

- 11. PRINCETON PHILATELICS, Tappan, NY
- 13. JOY COVERS & STAMPS, Charlotte Hall, MD

GERMANY

- 18. JOHN C. OLSON, Orlando, FL
- 37. A & H STAMPS, Bloomington, MN
- 32. A TOUCH OF CLASS, New York, NY
- 46-47. COLLECTORS CONNECTION, Danbury, CT

ISRAEL

- 54. GAREL INDUSTRIES, INC., Hewlett, NY

JAPAN

- 21. MICHAEL ROGERS, Winter Park, FL
- 25-26. SHULL SERVICE, Crofton, MD

LATIN AMERICA

- 16. CLASSIC COLLECTOR, Ottawa, Ontario
- 27. GALLEON PHILATELISTS, Gloucester, VA

LITERATURE

- 10. MARYLAND STAMP & COIN, Bethesda, MD
- 44. EURO-YU STAMP COLLECTING, London W1Y 9FB England
- 45. POSTAL HISTORY INTL, Burlington, NC

NEW ISSUES

- 13. JOY COVERS & STAMPS, Charlotte Hall, MD
- 48. EASTERN SHORE STAMP CO., Fruitland, MD

OFFICIALS

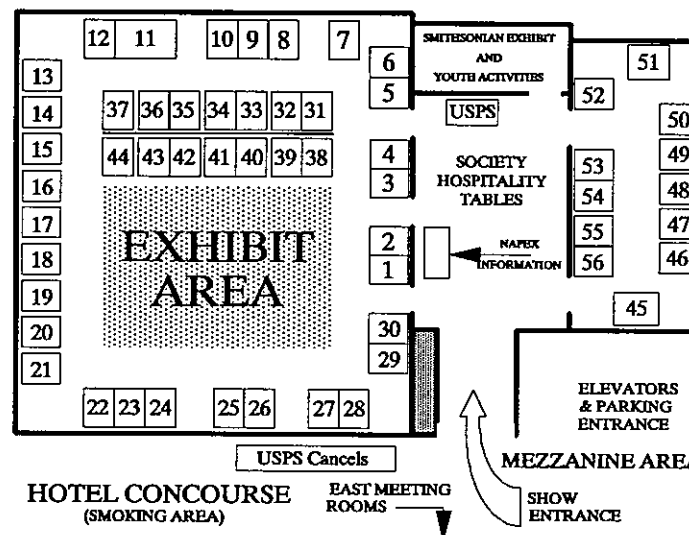
- 39. GOLDEN PHILATELICS, Cedarhurst, NY

PHILIPPINES

- 49. COUGHLIN'S, Washougal, WA

POSTAL HISTORY

- 15. THOMAS P. SINGER, San Rafael, CA
- 19. JOHN CHOVAN, Camden, DE
- 9. JOHN B. WHALEN, Crofton, MD
- 20. THE FOLDED LETTER, Lafayette Hill, PA
- 18. JOHN C. OLSON, Orlando, FL
- 24. BUD ELVGREN, St. Paul, MN
- 28. PHIL BANSNER, West Lawn, PA
- 31. M & W BROOKS, Riverdale, NY
- 33. VICTOR B. KRIEVINS, Bryn Mawr, PA
- 32. A TOUCH OF CLASS, New York, NY
- 8. EDWARD HINES, Danbury, CT
- 37. A & H STAMPS, Bloomington, MN
- 54. GAREL INDUSTRIES, INC., Hewlett, NY
- 40. PHILATELIC CONSULTANTS, Darien, GA
- 41. CONNEXUS, Guilford, CT
- 56. GLOBAL PHILATELICS ASSOCIATES, Vandalia, OH
- 34. WEBSTER F. STICKNEY, Parker, CO
- 52. MILLS PHILATELICS, Rexford, NY
- 35. AUSDENMOORE-McFARLANE, Midland, MI



PROOFS & ESSAYS

- 39. GOLDEN PHILATELICS, Cedarhurst, NY
- 43. ARGYLL ELKIN LIMITED, London W1R 9FB England
- 44. EURO-YU STAMP COLLECTING, London W1Y 9FB, England

REVENUES & TELEGRAPH

- 1. ERIC JACKSON, Leesport, PA
- 14. DAVE ALLEGO, Ambridge, PA
- 23. GARY HOECKER, Portland, OR
- 39. GOLDEN PHILATELICS, Cedarhurst, NY
- 22. RIGASTAMPS, Eaton, OH
- 30. HARRIS & HARRIS, Baltimore, MD

RUSSIA

- 34. WEBSTER F. STICKNEY, Parker, CO
- 31. M & W BROOKS, Riverdale, NY

RYUKYUS

- 21. MICHAEL ROGERS, Winter Park, FL
- 25-26. SHULL SERVICE, Crofton, MD

SCANDINAVIA

- 7. SCOJO STAMPS, Ridgely, MD
- 30. HARRIS & HARRIS, Baltimore, MD

SUPPLIES

- 51. SUBWAY STAMP SHOP, New York, NY

TOPICALS

- 13. JOY COVERS & STAMPS, Charlotte Hall, MD
- 46-47. COLLECTORS CONNECTION, Danbury, CT
- 48. EASTERN SHORE STAMP CO., Fruitland, MD
- 31. M & W BROOKS, Riverdale, NY

UNITED NATIONS

- 39. GAREL INDUSTRIES, INC., Hewlett, NY

UNITED STATES

- 3. MOUNTAINSIDE STAMPS, Mountainside, NJ
- 5. LATHEROW & CO., Arlington, VA
- 11. PRINCETON PHILATELICS, Tappan, NY
- 10. MARYLAND STAMP & COIN, Bethesda, MD

UNITED STATES—Continued

- 23. GARY HOECKER, Portland, OR
- 25-26. SHULL SERVICE, Crofton, MD
- 28. PHIL BANSNER, West Lawn, PA
- 29. RICHARD CHAMPAGNE, Newton, MA
- 33. VICTOR B. KRIEVINS, Bryn Mawr, PA
- 8. EDWARD HINES, Danbury, CT
- 37. A & H STAMPS, Bloomington, MN
- 48. EASTERN SHORE STAMP CO., Fruitland, MD
- 53. R. W. R. QUALITY STAMPS, Merrifield, VA
- 55. J. S. VOLUTZA PHILATELICS, Mt. Penn, PA
- 50. STAMP KING, Chicago, IL
- 35. AUSDENMOORE-McFARLANE, Midland, MI

U. S. POSSESSIONS

- 49. COUGHLIN'S, Washougal, WA
- 52. MILLS PHILATELICS, Rexford, NY

WESTERN EUROPE

- 3. MOUNTAINSIDE STAMPS, Mountainside, NY
- 16. CLASSIC COLLECTOR, Ottawa, Ontario
- 30. HARRIS & HARRIS, Baltimore, MD
- 50. STAMP KING, Chicago, IL

WORLD WIDE

- 5. LATHEROW & CO., Arlington, VA
- 7. SCOJO STAMPS, Ridgely, MD
- 10. MARYLAND STAMP & COIN, Bethesda, MD
- 9. JOHN B. WHALEN, Crofton, MD
- 14. DAVE ALLEGO, Ambridge, PA
- 25-26. SHULL SERVICE, Crofton, MD
- 27. GALLEON PHILATELISTS, Gloucester, VA
- 40. PHILATELIC CONSULTANTS, Darien, GA
- 41. CONNEXUS, Guilford, CT
- 43. ARGYLL ETKIN LIMITED, London W1R 9FB England
- 55. J. S. VOLUTZA PHILATELICS, Mt. Penn, PA
- 44. EURO-YU STAMP COLLECTING, London W1Y 9FB England
- 38. LEBANON STAMP SHOP, Lebanon, PA
- 50. STAMP KING, Chicago, IL
- 36. GENE SCHRIER, Upper Montclair, NJ



A	Frames
G. Adolph ACKERMAN.....	256-262
Howard L. ARNOULD.....	264
B	
Seymour BANCIK.....	268
Michael A. BASS.....	43-47
Ron BENTLEY.....	171-180
Jackson BOSLEY.....	3-42
Eugene BOWMAN.....	265
George W. BOWMAN.....	97-101
John BRIGGS.....	227-234
C	
Julian CABARRUS.....	139-144
Howard S. CHAPMAN.....	253-255
William R. CLUCK.....	220-226
Larry COHN.....	109-118
Brock COVINGTON.....	285
D	
Robert D'ELIA.....	275
Robert D'ELIA.....	9-27
F	
George Y. FISHER.....	48-54
Albert FRIEDBERG.....	78-85
G	
D. Scott GALLAGHER.....	266
Arthur GROTEN.....	283
Arthur GROTEN.....	277
H	
Leo J. HARRIS.....	269
Bernard A. HENNIG.....	181-188
Bernard A. HENNIG.....	281
I	
Peter K. IBER.....	273
Kalman V. ILLYEFALVI.....	284
Mark ISAACS.....	287
J	
Alice J. JOHNSON.....	73-77
K	
Arthur M. KAHN.....	189-193
Albert KAHN.....	213-216
George J. KRAMER.....	267
Kenneth J. KUTZ.....	263

L	Frames
John W. LARSON.....	282
David LEBSON.....	127-132
Malcom G. LOWE.....	270
M	
Heinz MESSTORFF.....	163-170
Heinz MESSTORFF.....	119-126
Peter A. MICHALOVE.....	91-96
Michael D. MUELLER.....	86-90
N	
Fritz S. NUSSBAUM.....	202-207
O	
Charles M. OTSTOT.....	217- 219
P	
Donald J. PETERSON.....	11-18
Raymond PIETRUSZKA.....	194-198
Robert B. PILDES.....	145-154
Q	
Roger P. QUINBY.....	155-162
R	
Erick REEBER.....	288
Erick REEBER.....	237-239
M. R. RENFRO.....	133-138
Morris ROSEN.....	1-10
S	
Roger G. SCHNELL.....	276
Stephen D. SCHUMANN.....	274
Fred SEIFERT.....	271
George V. SHALIMOFF.....	235-236
David SKIPTON.....	28-36
Clarence A. STILLIONS.....	272
Harlan F. STONE.....	240-244
Henry SWEETS.....	55-62
T	
Joseph TAYLOR.....	102-108
Ernst THEIMER.....	63-72
Ryan TRAINER.....	279
W	
John WARREN.....	286
George G. WERBIZKY.....	99-201
J. Edgar WILLIAMS.....	208-212
Joseph WOFCHUCK.....	245-252
Gerhard S. WOLFF.....	280
F. Houston WYNN.....	278

Frames	
1-10	Ghetto Post in German Occupied Poland (1940-1944) [Exhibited <i>hors concours</i>] Ghetto Post from the five districts of the General Government of Poland and the territories annexed to Germany proper. <i>Morris Rosen</i>
11-18	Postal History of the Spanish Philippines, 1825-1898 Postal routes and rates. Stampless/stamped/official/registered mail and Postal Cards. <i>Donald J. Peterson</i>
19-27	Prephilatelic and Classic Ecuador Ecuadorian Postal History from 1769 to 1880, including maritime mail. <i>Robert A. D'Elia</i>
28-36	Postal Censorship in Imperial Russia Examines all aspects of postal censorship — civil, prison, court, foreign printed matter and military. <i>David M. Skipton</i>
37-42	Mail from the US Navy in Asia 1898-1923 Exhibit shows examples of personal and official mail sent by the U.S. Navy in Asia 1898-1923 using both foreign and domestic postal channels. <i>Jackson W. Bosley</i>
43-47	Allied Forces in Palestine During WWI Examination of British, French, Italian, Australian and New Zealand Forces in Palestine. <i>Michael A. Bass</i>
48-54	U.S. Postal Agency in Shanghai, 1867-1922 A study of the postal markings and usages, including unsurcharged and surcharged issues, also the only recorded cover bearing the Darrah overprints. <i>George Y. Fisher</i>
55-62	China to the United States: Surface, Airmail and Registry Rates of 1945-1949 Inflation Period Covers illustrating inflation in China 1945-1949 reflected in Surface, Airmail and Registry rates to the United States. <i>Henry Sweets</i>

- 63-72 **Austria—The Heller-Kronen Era, 1900-1925**
The usages of the various stamps used in Austria during the first quarter of the twentieth century.
Dr. Ernst J. Theimer
- 73-77 **Figure Skating**
A look at some of the history and techniques used.
Alice J. Johnson
- 78-85 **The Holocaust**
Antisemitism; Jewish communities in Europe; Ghettos; Concentration Camps 1934-1944.
Dr. Albert Friedberg
- 86-90 **Up the Monkey Puzzle Tree**
A philatelic study of the Order Primates (monkeys, apes, humans and prosimians) and primate evolution.
Michael D. Mueller
- 91-96 **Soviet Field Post of World War II**
A study of mail to and from Soviet forces and related areas during World War II.
Peter A. Michalove
- 97-101 **The Rowe Aero-Achievements. From WIAE to Pan Am, 1927-1931**
The contributions of Basil Rowe in founding and operating the West Indian Aerial Express (1927-1928) and participating in Pan American Airways inaugural flights (1929-1931).
George W. Bowman
- 102-108 **Allied Intervention in Russia**
Allied Forces mail showing military cancels, censor marks, P.O.W. mail from Siberia and civilian mail censored by the Allies, arranged by area: North Russia and Siberia.
Joseph Taylor
- 109-118 **Revenue Stamps of Israel 1948-1993**
Exhibit covers revenue stamps of Israel from 1948 on, plus local area revenues.
Larry Cohn
- 119-126 **The Hanseatic City of Hamburg**
Postal History including all foreign post offices during the last century.
Heinz Merstorff
- 127-132 **Israel Town Emblem Issues I & II, 1965-1977**
To show how the ranges were determined by printing methods and constant flaws, and a showing of a part of the series to demonstrate differences and pertinent characteristics used.
David Lebson
- 133-138 **Russia Offices Abroad: The Far East**
A marcography of the Russian Offices in China, Manchuria, Sinkiang, Mongolia.
M. R. Renfro
- 139-144 **Philippines Pioneer Flights 1919-1932**
Covers from the experimental and pioneering flights showing the establishment and development of air routes and services. Includes several "discovery" covers.
Julian Cabarrus
- 145-154 **Israel Do'Ar Ivri Issue**
Study including essays, perforation and printing varieties, tabs, F.D.C., plate number blocks, Minister sheets and postal use, including the Dmei Do'Ar.
Dr. Robert B. Pildes
- 155-162 **Russian Stamps and Postal Stationery Used in Finland**
Traces Russification of Finnish Post, optional and obligatory uses of Kopek/Ruble stamps in Finland to 1918.
Roger P. Quinby
- 163-170 **Mexico Profile**
From the colonial time until membership of the World Postal Union.
Heinz Mestorff

- 171-180 **Navigation and Commerce — Indochina's First Definitives**
Ron Bentley
- 181-188 **Danzig — The Airmail issue of 1924**
Study of the production and use, including original drawing, essays, first flights, catapult and Zeppelin usages.
Bernard A. Hennig
- 189-193 **Israel First Day Covers**
Classification and evolution of design and use of Israel First Day Covers.
Arthur M. Kahn
- 194-198 **Russian Soviet Federated Socialist Republic, November 1917 — June 1923**
The postal history of the RSFSR expressed by both stamps and covers.
Raymond J. Pietruszka
- 199-201 **Ostarbeiter Mail in WWII**
This exhibit shows examples of Ostarbeiter mail for various periods of its existence, including non-Ostarbeiter use of the special postcards.
George G. Werbizky
- 202-207 **Foreign Post Offices in the Holy Land**
Postal history of foreign nations who provided postal services in the Holy Land.
Fritz S. Nussbaum
- 208-212 **Scott and Shackleton in the Antarctic**
A philatelic overview of New Zealand's First Antarctic Dependencies, 1901-13, including philately and postal history, plus a postscript on Shackleton's last expedition.
J. Edgar Williams
- 213-216 **Unusual Handling of Holyland Mail**
Categories covered: Forwarded, returned, delayed, improperly rated, unusually routed and irregularly handled mail.
Albert Kahn

- 217-219 **Sinoca**
Sinoca exhibits stamps issued by non-Chinese countries, i.e., other than PRC, ROC, Hong Kong and Macao, which have a Chinese theme.
Charles M. Otsot
- 220-226 **Chinese Express Stamps 1906-1916**
A study of Express Stamps of the seven Imperial issues and first two Republican issues. Includes proofs, plating, overprints, chops, routing, express letter bills and varieties.
William R. Cluck
- 227-234 **What's Going On Here: An Historian Collides With The Soviet Union**
Stamps, covers, postal history, philatelic history, professional historical comment.
John Briggs
- 235-236 **The Varnish Lozenges on Some Issues of Russia and Soviet Russia in the Period 1909-1919**
Exhibit demonstrates use of ultraviolet light photography to reveal the invisible varnish lines allowing the study of characteristics, anomalies and varieties.
George V. Shalimoff
- 237-239 **The British Consular Mail Stamps of Madagascar**
The 1884 and 1886 stamps issued by the British Vice-Consul in Antananarivo, Madagascar, showing the various denominations and varieties.
Erick Reeber
- 240-244 **Switzerland's Imperforate Sitting Helvetia**
Production and use, 1854-1863
Harlan F. Stone
- 245-252 **Military Forces in the Holy Land WWI**
Sent mail from Holy Land during World War I.
Joselph Wofchuck

- 253-255 **The Zodiac Definitives**
All printing dates on plate blocks of the Zodiac definitives of Israel.
Howard S. Chapman
- 256-262 **Soviet Air Fleet Semi-Official Stamps**
This exhibit details the unique Soviet Semi-Official (revenue-like) emissions of the 1920/30's used for securing funds for Soviet aviation activities.
Dr. G. Adolph Ackerman
- 263 **Kutztown, PA.**
Early Postal History of Kutztown, Penn.
Kenneth J. Kutz
- 264 **The US-DWI Connection - Packet Period**
Covers showing various routes and services connecting the US and the DWI during the period packets were operating up until 1879.
H. L. Arnould
- 265 **Cape of Good Hope, The Fourpence Triangles**
Study of the 4d. Cape triangles produced by three different printers, illustrated with record size pieces, covers and complete reconstruction of the 240 stamp sheet.
Eugene E. Bowman
- 266 **Kentucky in the Civil War**
Mail sent inside, to, and from Kentucky from 1861 to after the war.
D. Scott Gallagher
- 267 **Between B.C. and G.B. 1849-1869**
The postal history of mail between Great Britain and British Columbia including that between Great Britain and California.
George J. Kramer

- 268 **Wrapper Bands**
To illustrate the XIX Century postal usages on wrapper bands of the British Colonial Empire.
Seymour Banchik
- 269 **Prephilatelic Guatemala City**
To, through, and from Guatemala City—a survey of prephilatelic mail between 1750 and 1870.
Leo J. Harris
- 270 **The Mulready — What Is That?**
Great Britain's first prepaid postal stationery that most stamp collectors and dealers know so little about.
Malcolm G. Lowe
- 271 **The Queen Victoria Post Cards of Jamaica**
Shows the provisional and definitive post cards of Jamaica issued and used during reign of Queen Victoria.
Col. Fred F. Seifert
- 272 **Newfoundland's Last Definitive Postage Stamp**
Newfoundland issued its last definitive 21 April 1947 — a new portrait of Princess Elizabeth. Stages in its production and illustrations of usages are exhibited.
Clarence A. Stillions
- 273 **Thai Maximum Cards**
A one frame composite of a four frame Mophila Salon Exhibit for Bangkok 93.
Dr. Peter K. Iber
- 274 **Labuan Postal Cards**
Survey of the five Postal Cards issued by Labuan.
Stephen D. Schumann
- 275 **The Classic Stamps of Ecuador: The Good, the Bad and the Ugly**
An educational exhibit, that shows the differences between the genuine stamps, the forgeries and the fantasies of the first two issues.
Robert A. D'Elia

- 276 **Transit St. Thomas**
During the mid-19th century, St. Thomas was the major distribution point for mail to and from the Caribbean. This exhibit shows examples of British, French and Spanish mail that transited St. Thomas.
Dr. Roger G. Schnell
- 277 **Air Routes Between Palestine and U.S., September 1939 to 1948**
Study of airmail routes to and from Palestine and US during WWII and the end of the British Mandate.
Dr. Arthur H. Groten
- 278 **Fantasies, Fakes and Forgeries**
The arts of "Creative Embellishment" applied to stamps of the Australian States.
F. Houston Wynn
- 279 **India: Refugee Relief Tax 1971-1973**
Postal history of tax imposed by India on mail to fund relief for refugees from Bangladesh's war of independence from Pakistan.
Ryan Trainer
- 280 **Rates of the 1930 USA Graf Zeppelin Issue**
US Zeppelin stamps flown on the Europa-Pan American flight making the correct rates in all possible combinations.
Gerhard S. Wolff
- 281 **Spy & Propaganda Forgeries**
Bernard A. Hennig
- 282 **Commonwealth Postage Due Rarities**
A selection of Commonwealth Postage Dues showing representative development of these issues with accent on rarity.
John W. Larson
- 283 **The Nairn Way: Baghdad-Haifa Overland Desert Mail Route**
Study of Fiat motor mail route across the Syro-Iraqi Desert begun in 1923 by the Nairn brothers.
Dr. Arthur H. Groten
- 284 **It's Not Easy to be a $\frac{1}{2}$ d. Postcard**
A study of Post Office economy.
Kalman Illyefalvi

- 285 **Fiscals and Stamped Paper of the Indian Princely States**
A sampler showing a variety of the fiscal stamps, printed fiscal paper and the handstamped paper of the Indian Princely States.
Brock Covington
- 286 **The Indian State of Bundi as part of Rajasthan, 1948-1950**
A study of the stamps and postal history of the last 18 months of Bundi Philately.
John Warren
- 287 **Destination Indochina**
A collection of interesting inbound mail to this exotic destination.
Mark Isaacs
- 288 **Obscure Rarities**
Erick Reeber

NAPEX ANNUAL MEETING

This year's meeting will be held during NAPEX 93.
Come and participate in the election of directors
for 1993-94 and other business as may
necessary.

Time: 4 pm, June 5, 1993
Place: Concourse Room 1
Light refreshments will be served

Sheraton National Hotel,
Columbia Pike & Washington Blvd
Arlington, VA 22204

