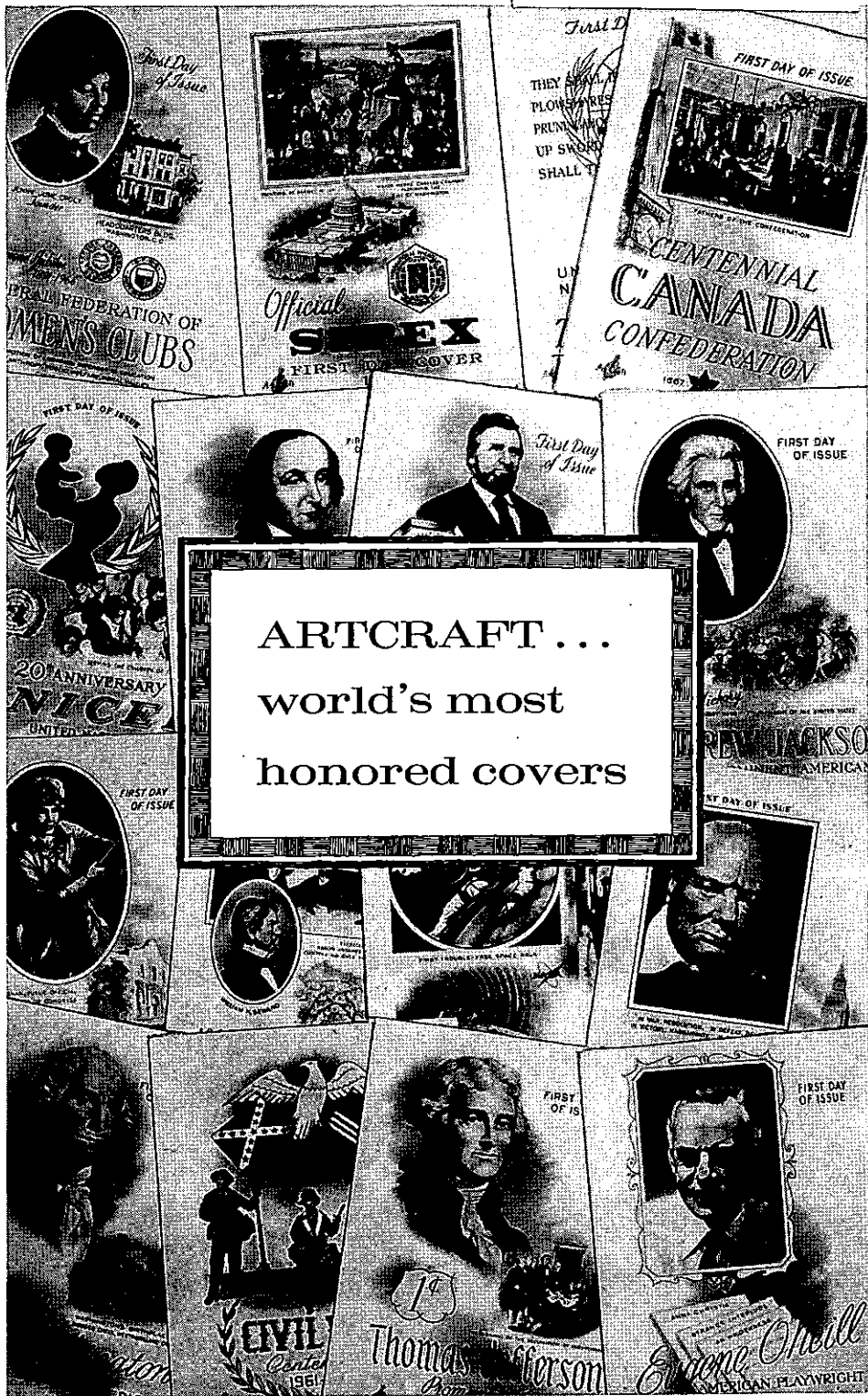


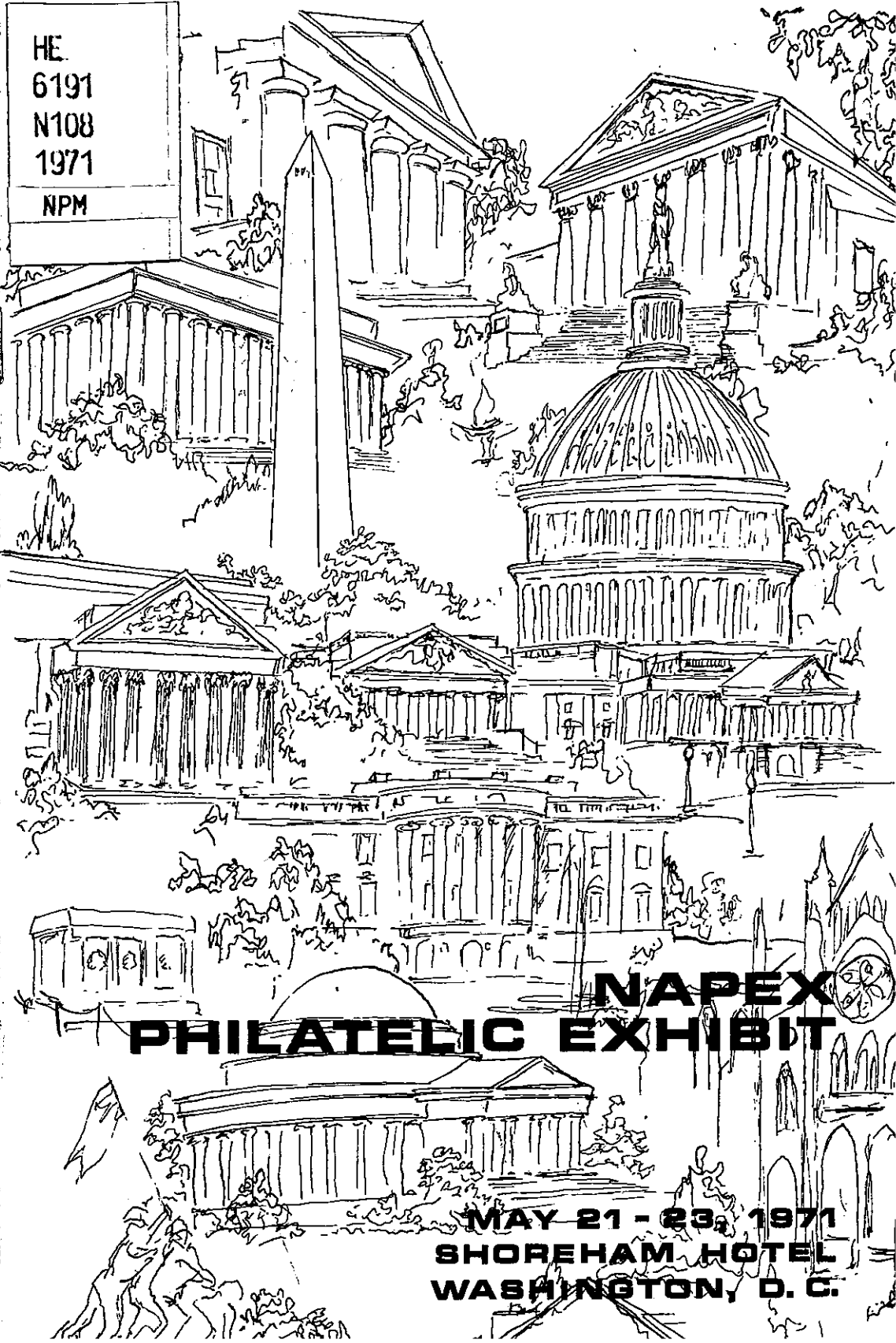
SMITHSONIAN INSTITUTION LIBRARIES



3 9088 00571 3086



ARTCRAFT ...  
world's most  
honored covers



HE  
6191  
N108  
1971  
NPM

# NAPEX PHILATELIC EXHIBIT

MAY 21 - 23, 1971  
SHOREHAM HOTEL  
WASHINGTON, D. C.

HE  
6191  
N108  
1971  
NPM

N A P E X 1 9 7 1

EXHIBITION AND CONVENTION

MAY 21-23, 1971/

PARTICIPATING SOCIETIES:

*Spring Meeting*  
SOCIETY OF PHILATELIC AMERICANS

*Annual Meeting*  
SCANDINAVIAN COLLECTORS CLUB

*Annual Meeting*  
U.S. PHILATELIC CLASSICS SOCIETY

*First Annual Meeting*  
DWIGHT D. EISENHOWER PHILATELIC AND  
HISTORICAL SOCIETY

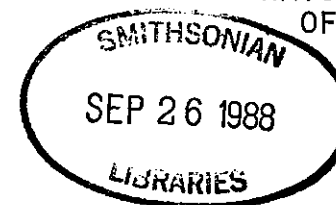
*Meeting*  
CHINA STAMP SOCIETY

*Meeting*  
KOREA STAMP SOCIETY

*Meeting*  
GEORGE WASHINGTON MASONIC STAMP CLUB

SPONSORED BY:

NATIONAL PHILATELIC EXHIBITIONS  
OF WASHINGTON, D. C., INC.



## WELCOME TO NAPEX

A national stamp exhibit is a long time in the making. It took a great deal of hard work by many people, many who do not even have their names printed in this program. To those who did the many necessary job, big & small, in the past and present to make NAPEX 1971 a success, we offer our humble thanks and great appreciations.

NAPEX is the genesis of an idea that the efforts of many can contribute a great deal more than the efforts of the few. NAPEX is an organization of individuals and clubs located in or near the nation's capital. Past shows were sponsored by NAPEX in 1950 and 1964; NAPEX played a large part in SIPEX (Sixth International Philatelic Exhibition) held in Washington in 1966. NAPEX is designed to promote philately in the national capital region and to encourage the educational motives of stamp collecting.

We extend our welcome to all of the Societies that are holding meetings at NAPEX 1971, and a very special welcome to the Society of Philatelic Americans which is holding its spring meeting, and to the Scandinavian Collectors Club & The U. S. Philatelic Classics Society which are holding their annual meetings.

On behalf of the Officers, Board and Members of NAPEX, I welcome all of our friends and visitors and wish you the good time that we worked so hard and long to prepare.



Seymour B. Stiss,  
Chairman

National Philatelic Exhibitions  
of Washington, D.C., Inc.



I am delighted to have this opportunity to welcome all the visitors to this grand NAPEX show. Whenever NAPEX is held, generally twice each decade, it is always an outstanding philatelic event because of its unique setting. The month of May in Washington finds the capital city particularly beautiful, and every moment free of the show should be spent visiting the many places you know in your national capital.

The S. P. A. has taken this opportunity to hold its *Spring Meeting* at NAPEX and invites every visitor to come to its booth in the Bird Cage Walk. The S.P.A. is planning a number of events for its members and I wish to urge members and non-members alike to come and talk to our regional representatives and learn what our Society has to offer its members.

Discover for yourself the pleasure and value of belonging to a national society prepared to perform many philatelic services for you. The Society of Philatelic Americans is known as "the friendly society" and we make every effort to live up to that reputation by answering all letters promptly and effectively. We sponsor frequent "get-togethers" for members and officers.

On behalf of the members and officers of The Society of Philatelic Americans I welcome you to our annual Spring Meeting.



Milton Mitchell, *President*

# NATIONAL PHILATELIC EXHIBITIONS

OF WASHINGTON, D.C., INC.

## BOARD OF TRUSTEES

Seymour B. Stiss - Chairman  
Horace W. Harrison - Vice-Chairman  
John N. Hoffman - Secretary  
Ellery Denison - Treasurer  
Jay F. Carpenter - Board Member  
Leonard M. Dulberg - Board Member  
Carroll L. Lloyd - Board Member  
Milton Mitchell - Board Member  
Svend Yort - Board Member

## MEMBER CLUBS

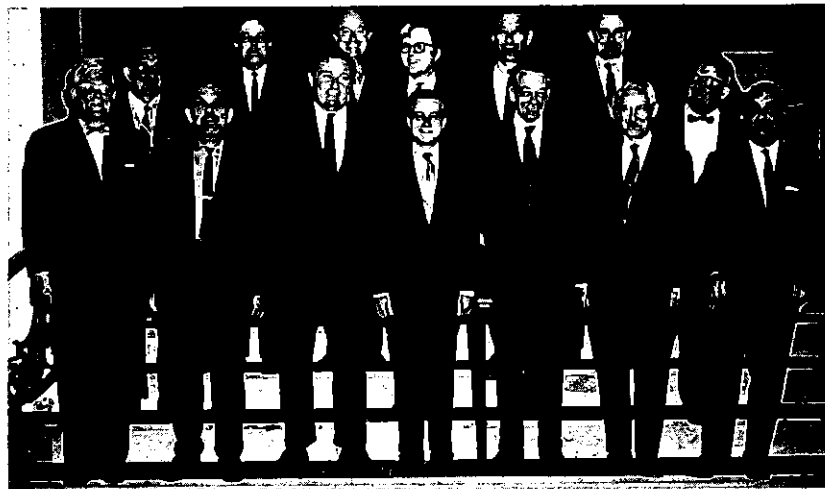
Arlington County Recreational Stamp Club  
Baltimore Philatelic Society  
Capita; Precancel Club  
China Stamp Society - National Capital  
Junk Chapter  
Collectors Club of Baltimore  
Collectors Club of Washington  
D.C. Area Chapter - Korea Stamp Society  
George Washington Masonic Stamp Club  
Northern Virginia Stamp Club  
Library of Congress Philatelic Club  
Potomac Chapter - American Topical  
Association  
Society of Indo-China Philatelists  
U.S.C.S. - Admiral Byrd Chapter  
Washington Philatelic Society

# NAPEX COMMITTEES

Seymour B. Stiss - General Chairman

## COMMITTEE CHAIRMEN

Svend Yort.....Awards  
Ellery Denison.....Banquet  
Donald B. Brenke.....Bourse  
George T. Turner.....Exhibits  
Herbert A. Trenchard.....Exhibits  
Ellery Denison.....Finance  
Leonard M. Dulberg.....Floor  
Horace W. Harrison.....Frames  
Carroll L. Lloyd.....Judges  
Jay F. Carpenter.....Printing  
John N. Hoffman.....Program  
Travis K. Hedrick.....Publicity  
Milton Mitchell.....Registration  
Ralph Sigler.....Security



Front row, left to right: George T. Turner, John N. Hoffman, Horace W. Harrison, Seymour B. Stiss, Svend Yort, Ellery Denison & Milton Mitchell.  
Rear row, left to right: Jay F. Carpenter, Carroll L. Lloyd, Donald B. Brenke, Herbert A. Trenchard, Leonard M. Dulberg, Ralph Sigler and Travis K. Hedrick.

## CALENDAR OF EVENTS

FRIDAY, MAY 21, 1971:

- 10:A.M. Opening of Exhibition & Bourse  
Ribbon Cutting in Bird Cage Walk with James A. Conlin, Director, Bureau of Engraving & Printing
- 11:A.M. First Day Ceremony, 21¢ Airmail - Empire Room  
First Day Sales & Servicing- Heritage Room
- 2:P.M. Society of Philatelic Americans (1st Session)-Tudor Room
- 3:30P.M. Eisenhower Society Meeting-Caucus Room
- 10:P.M. Exhibition & Bourse Close

SATURDAY, MAY 22, 1971:

- 10:A.M. Exhibition & Bourse Open
- 10:A.M. Society of Philatelic Americans (2nd Session)-Tudor Room
- 1:30P.M. Bureau Issues Assoc. Seminar -Tudor Room
- 1:30P.M. U.S. Philatelic Classics Society Annual Meeting-Executive Room
- 3:P.M. G. Washington Masonic Stamp Club Meeting-Tudor Room
- 3:P.M. Canal Zone Study Group Meeting-Council Room
- 4:P.M. Eisenhower Society-Cabinet Room
- 6:P.M. Cash Bar-Paladian Room
- 7:30P.M. Awards Banquet-Paladian Room
- 10:P.M. Exhibit & Bourse Close

SUNDAY, MAY 23, 1971

- 10:00 A.M. Exhibition & Bourse Open
- 10:00 A.M. U.S. Classics Society Seminar-Heritage Room
- 10:30 A.M. American Academy of Philately  
Director's Meeting- Directors Room
- 11:00 A.M. Scandinavian Collectors Club  
Board Meeting-Cabinet Room
- 12: Noon Scandinavian Collectors Club  
Annual Meeting-Heritage Room
- 2:00 P.M. Korean Stamp Society Meeting-Lounge-Bird Cage Walk
- 2:00 P.M. Eisenhower Society Meeting-Committee Room
- 2:30 P.M. U.S. Classics Society Slide Show-Heritage Room
- 5:00 P.M. NAPEX 1971 Closes

Please Note: NAPEX Office: Press Room  
Registration Desk is located in the Main Lobby

Exhibits from the Post Office Department:

Bubble in Diplomat Room-Contains 1918 U.S. Airmail Plate Proofs including the 24¢ Inverted Airmail

Poster Displays:

Flag Issues (10 different)  
\$.00 Moore Regular Issue  
\$1.00 Airlift Issue  
20¢ and 21¢ Regular International Airmail Issues  
"The Stamp Story" - A tape and slide presentation

## NAPEX JUDGES

James H. Beal - Warren, Ohio

Herbert J. Bloch - New York, N.Y.

George W. Brett - Washington, D.C.

Mrs. Edith M. Faulstich - Yonkers, N.Y.

John S. Silverts - Wilmington, Delaware

Apprentice Judges

Clyde Jennings, Jr. - Jacksonville, Florida

Carroll L. Lloyd - Baltimore, Maryland

\*\*\*\*\*

*The judges have the privilege of consulting independent opinion should they so desire, but in all cases their decision shall be final.*

## NAPEX AWARDS

NAPEX Grand Award, for best exhibit in the show

*First, Second, & Third Awards will be made on an "open show" basis, without regard to classification, or to the various Society awards. These awards will consist of gold, silver, and bronze medals.*

## SOCIETY AWARDS

*SOCIETY OF PHILATELIC AMERICANS:*

SPA Medal: Best in show by a member  
SPA Research Award

*BUREAU ISSUES ASSOCIATION:*

Walter W. Hopkinson Memorial Trophy-  
for best in Bureau Issues by a member

*SCANDINAVIAN COLLECTORS CLUB:*

Trophy for best exhibit of Scandinavia

*AMERICAN TOPICAL ASSOCIATION:*

Gold, Silver, & Bronze medals for  
first, second and third in topical  
division

*CHINA STAMP SOCIETY:*

Award for best exhibit of China or  
related fields

*DWIGHT D. EISENHOWER PHILATELIC & HISTORICAL  
SOCIETY:*

Awards: first, second & third

*GEORGE WASHINGTON MASONIC STAMP CLUB:*

Award

*UNITED POSTAL STATIONERY SOCIETY:*

Certificate

## CLASSES FOR EXHIBITS

The following Classes are solely for the orderly arrangement of the exhibits and for ease of viewing:

Class:	No. Frames
I. United States & Possessions	
A. Postal History	33
B. 19th Century to 1893	34
C. Bureau Issues, 1884 and on	50
D. Revenue Issues	13
E. Postal Stationery	4
F. Essays & Proofs	3
II. Confederate States	16
III. European Countries & Colonies	47
IV. British Commonwealth and Colonies	29
V. Latin America	16
VI. Independent Countries: Rest of the world	23
VII. Airmails (U.S. & Foreign)	22
VIII. Topical divisions	
A. Thematic	48
B. Purpose of Issue	15
C. Subject	48
D. Of A Single Country	2
IX. Other Specialities	5
Total Frames:	408

## CATALOGUE OF EXHIBITS

Note: Frames No. 1-200 are located in the Ambassador Room and contains Classes I, II, & III. (U.S. & Possessions, Confederates and Europe & Colonies) Frames No. 201-408 are located in the Diplomat Room and contains Classes IV through IX. (British Commonwealth, Latin America, Rest of the World, Airmails, Topicals and Other Specialities).

### IA UNITED STATES : POSTAL HISTORY

#### FRAME NO.

- |     |   |
|-----|---|
| 1-  | W. Newton Landis, Lansdown, Pa.   |
| 6   | U.S. Ship Mail, 1817-1870<br>Representative covers show-mail carried by sailing vessels, steamships, and Mississippi River packets.   |
| 7-  | Phillip Rochlin, Accokeek, Md.  |
| 10  | John Charles Fremont<br>Campaign, patriotic envelopes & labels as a Presidential Candidate (1856 & 1864) & as a Civil War general.  |
| 11- | Miss Edith R. Doane, E. Orange, N.J.  |
| 12  | Rural Free Delivery: Markings & Services. Earliest markings, types, special & county services, postal evidence of an expanding nation for the 75th Anniversary of the RFD system. |

- 13 David T. Beals, III, Kansas City, Mo.  
*Horses in Classic U.S. Philately Stamps, cancellations, usages and covers including locals and expressses.*
- 14- David T. Beals, III, Kansas City, Mo.  
16 *New York Foreign Mails: 1871-76 Cancellations on stamps & covers.*
- 17- Mathias Koref, New York, N.Y.  
20 *Corner cards and Advertising envelopes of medicine & chemical companies.*
- 21- Ralzemond B. Parker, Detroit, Mich.  
24 *Odd Town Names of America An exhibit of covers, primarily 19th Century, from post offices having odd or unusual names.*
- 25- Ralzemond B. Parker, Detroit, Mich.  
30 *Philatelic March of Time An Americana exhibit of illustrated covers arranged by decades from 1850 to early 20th Century & showing progressive use of envelopes.*
- 31- Maj. Daniel C. Warren, Hillsborough, N.C.  
33 *Richmond, Virginia: 1800-1865 Postal History and postal markings of Richmond.*

## IB UNITED STATES: 19TH CENT. TO 1893

- 34- Frederick S. Chaffee, Rutland, Vt.  
38 *New York Postmasters Complete plating of the 40 positions & the ressure plate, with essays and color proofs.*
- 39- Hunter M. Thomas, Jr., Arlington, Va.  
43 *U. S. 3¢ 1857-60 Features two first day covers, a unique showing of all dates of the New York City 1853 year cancel, Pre-Civil War patriotic covers, unusual plate varieties, multiples & cancels.*
- 44- Thomas J. Alexander, Kansas City, Mo.  
48 *3¢ 1857 Contains history of experiments leading to first perforation of U.S. stamps, examples and plate varieties of each plate which was subsequently perforated.*
- 49- Frederick S. Chaffee, Rutland, Vt.  
61 *Fancy Cancellations on The 3¢ 1861-67 Issues.*
- 62- Henry M. Gobie, S. Miami, Fla.  
67 *United States 1869 Issue Selected pages showing usages and cancellations both on & off cover.*

## Ic UNITED STATES: BUREAU ISSUES

- 68 Chandler Bates, Gloucester, Va.  
*The Five Cent Red Error Two sheets of 100 showing the error.*
- 69- George T. Turner, Washington, D.C.  
70 *25¢ Stamps of 1922 Issue A study of shades, varieties and cancellations.*



- 71- Floyd L. Likins, Jr., Ft. Benning,  
74 Ga.  
*U.S. Flat Plate Booklets*  
*A study of the booklets & booklet panes including the A.E.F., the Lindburgh booklets, and the rare Lindburgh tab at bottom variety.*
- 75- Louis Grunin, Spring Valley, N.Y.  
89 *20th Century United States*  
*Selected pages from a comprehensive 20th Century collection illustrating the diversity of material available to the specialist.*
- 90- William M. Fitch, Philadelphia, Pa.  
92 *Bureau Issues: 1994 to 1932*  
*Selected pages showing general issues, imperfs, inverts, color omissions, etc.*
- 93- Richard H. Thompson, Lutherville,  
100 Md.  
*United States Imperforate Issues: 1906-1926*  
*A specialized collection of all items available during the period*  
  
*in full uncut sheets. Of particular interest are the center line blocks complete, blocks of 5¢ red error, and the 2¢ over 1¢ double entry of 1908.*
- 101- Armando J. Pahliai, Albuquerque,  
106 N.M.  
*U.S. Booklet Panes & Booklet Covers.*
- 107- Gilbert L. Peakes, Metuchen, N.J.  
113 *Paper Splices*  
*The variety on several issues. Also splices & plate numbers on the same strip.*

- 114- Jack V. Harvey, Alexandria, Va.  
115 *First Day Covers of the 1931 High Value Rotaries*  
*A comparison of the accepted first days and the true first days of this unheralded issue.*
- 116- Lloyd H. Flickinger, Pearl City,  
117 Hawaii  
*Territory of Guam*  
*Complete exhibit of stamps & covers, including Guam overprints of 1899 & Guam Guard Mail of 1930-31.*
- ID UNITED STATES: REVENUE ISSUES
- 118- Mathias Koref, New York, N.Y.  
120 *Revenue & Proprietary Stamps of the 1862 & 1898 Issues*  
*Selected medicine company trade cards, cancelled regular proprietary revenues of 1862-1881; match & medicine and proprietaries of 1898; also their encased postage.*
- 121- Robert H. Cunliffe,  
130 Pittsburgh, Pa.  
*United States Fiscal Stamps*  
*Selected pages of colonial revenues, British revenues for use in America, and embossed Federal issues with inverted centers and largest recorded multiples.*

I E UNITED STATES:POSTAL STATIONERY

- 131- Herbert J. Friedman, Washington,  
132 D.C.  
*The United States Centennial  
Embossed Stationery of 1876  
A showing of postmarks, cancellations, and corner cards to indicate the wide usage these envelopes received throughout the country.*
- 133- Alfred C. Channels, Jr., Vineland,  
134 N.J.  
*Hawaiian Postal Stationery  
Selected pieces of Hawaiian postal cards and envelopes showing various types of usage and cancellations.*

I F UNITED STATES:ESSAYS & PROOFS

- 135 Gordon Sprague, Portland, Me.  
*U.S. Proofs on Card*

II CONFEDERATE STATES

- 138- Arnold J. Rosenberg, Louisville,  
143 Ky.  
*Confederate States of America  
Regular issues, handstamp paids, postmasters' provisionals, patriotic, official, semi-official covers, and prisoner of war covers.*

- 144- Brian & Patricia Green  
149 Berwyn, Pa.  
*Postal History of the Confederate States of America 1860-1865  
Stages of development of Confederate postal system from U.S. used in the Confed*

*U.S. used in the Confederacy to advertising covers showing the scarcity of paper as the war drew to a close.*

- 150- Randy L. Neil, Overland Park,  
153 Ks.  
*Confederate States of America  
Steel Plate Printings  
Specialized collection of 10¢ steel plate printings including essay die proof, postmarks, usages, imprints, unofficial perforations, varieties and color gradations.*

III EUROPEAN COUNTRIES & COLONIES

- 154- Richard Green, Livingston, N.J.  
159  
*Prestamp Postmarks of Austria  
Examples of the stampless period from 1750 to 1850 are shown. The extent of the Austrian Empire is indicated by the countries where the towns shown are now located.*

- 160- William A. Sandrik, Washington,  
164 D.C.  
*Postal History of Czechoslovakia  
Specialized collection of stampless covers, cancellations, Austrian & Hungarian stamps used in the territory up to 1919.*

Bourse Dealers in Ambassador Room:

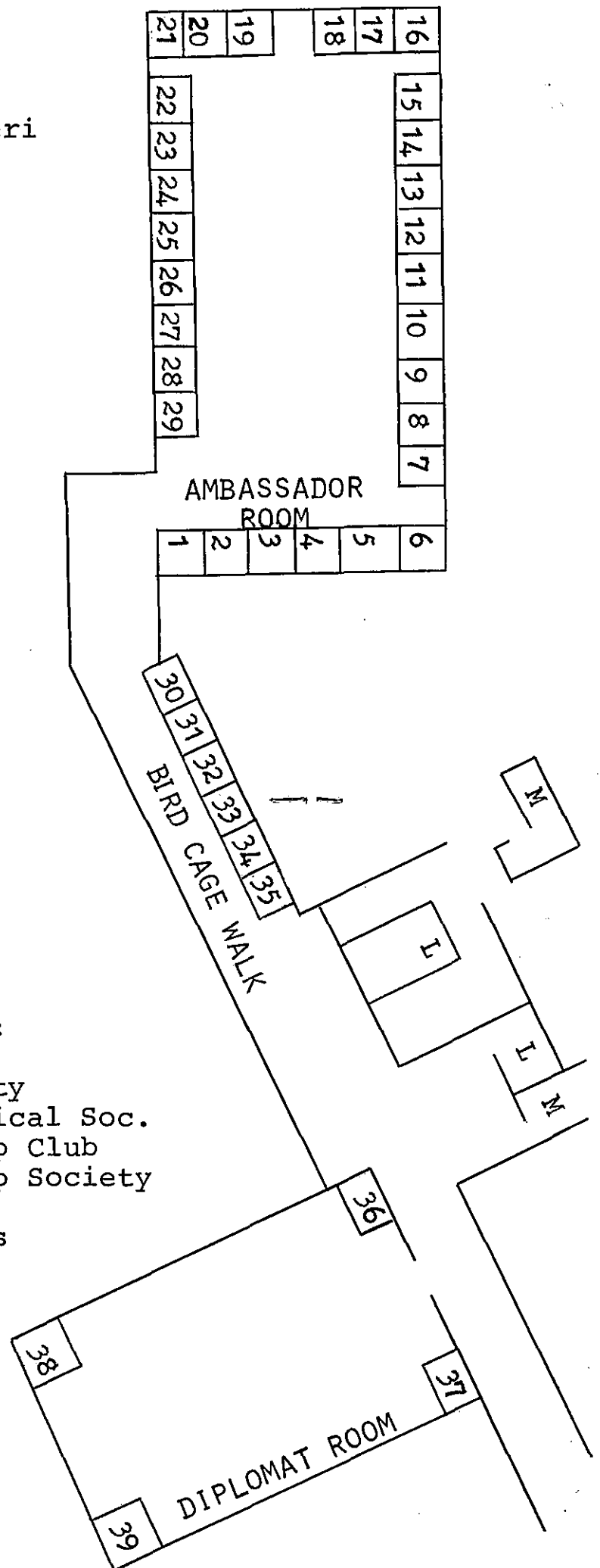
1. Raymond Snitow & Michael Lifrieri
2. Coin & Stamp Corner, Inc.
3. American Eastern Stamp Company
4. Matthew Bennett
5. Simmy's Stamp Company, Inc.
6. Harry E. Graetz
7. Hoffer's Stamps & Antiques
8. Martin A. Armstrong & Co., Inc.
9. William A. Fox
10. New England Stamp Company
11. Phoenix Stamps
12. Gerald Robert
13. Ed Ross & Don Toner Associates
14. Frank J. Hermann
15. The Clearing House for Stamps
16. Stanley P. Rumont
17. The Saturday Shop
18. Carl & Roy
19. Herman D. Most
20. The Stamp Mart
21. Alan Faden
22. Roiton Stamps
23. Greg Manning
24. Richard J. Nemetz
25. Dr. Edward D. Mueller
26. Robert H. Miller
27. Henry M. Spelman, III
28. Kenneth L. Rice
29. Mr. & Mrs. Marden F. Ross

Society Lounges In Bird Cage Walk:

30. U.S. Philatelic Classics Society
31. Eisenhower Philatelic & Historical Soc.
32. George Washington Masonic Stamp Club
33. China Stamp Society-Korea Stamp Society
34. Scandinavian Collectors Club
35. Society of Philatelic Americans

In The Dipomat Room:

36. Bureau of Engraving & Printing
37. The Crown Agents
38. United States Post Office
39. United Nations Post Office



## THE SCANDINAVIAN COLLECTORS CLUB

### ANNUAL MEETING

Sunday, May 23-12:Noon, Tudor Room

Swedish Coffee

Danish Pastry

- follow our meeting -

A speciality club with 605 members and 16 chapters from coast to coast, plus Canada and Iceland. The club's official publication is the "Posthorn" published four times a year. Other services include a sales circuit and expertizing.

All stamp collectors, novices or specialists, with an interest in the stamps of Denmark (including Danish West Indies and Greenland), Finland, Iceland, Norway or Sweden are invited to visit the S.C.C. Lounge (No. 34 on the diagram) or write to the Secretary, Frank E. Shaug, 10 Continental Drive, Middletown, Rhode Island 02840.

MEMBERS, PLEASE SIGN IN AT THE S.C.C.

LOUNGE

- 165- Gordon H. Torrey, Washington, D.C.  
170 *Austrian Offices in Turkey*  
*Covers and cancellations showing postal history.*
- 171- Svend Yort, Chevy Chase, Md.  
176 *Postal History of the Danish West Indies*  
*The postal service of Great Britain, France, Germany, and the United States; forwarding agents and private post offices; stamps of the steamship companies, and stamps of the D.W.I. on cover showing rates & combinations.*
- 177- Svend Yort, Chevy Chase, Md.  
178 *Denmark-Revalued Postal Cards*
- 179- M. W. Martin, New York, N.Y.  
182 *French Maritime Mail Covers*  
*Covers from the first established France-US Maritime Line of 1783 through the end of the 19th Century.*
- 183- A. Greblis, Pierrefonds,  
188 Canada  
*Latvia & Latvians in Post-cards & Covers*  
*Selected pages from a collection comprising the period 1817-1971.*
- 189- Roger J. Szymanski,  
190 Milwaukee, Wis.  
*Germany: French Units in the Wehrmacht, 1941-45*  
*Material relating to the French Units serving in the Germany Army during World War II, including errors, proofs, autographed artist proofs and covers.*

- 191- Victor E. Engstrom  
 195 Upper Montclair, N.J.  
*Norway, The Oscar I Issue, 1856-57*  
*Study of cancellations, rates, and varieties including plate reconstruction of the four stamps.*
- 196- Ernst M. Cohn, Washington, D.C.  
 200 *Scandinavian Crowned Posthorn Cancellations*  
*Danish & Norwegian cancels showing types & usages; also related Scandinavian crowned posthorn material.*

Note: Frames 201-408 are located in the Diplomat Room

The U.S. Post Office Department displays are located in the Diplomat Room.

#### IV BRITISH COMMONWEALTH AND COLONIES

- 201- J. King Horner, Baltimore, Md.  
 209 *British West Indies*
- 210- Gordon Sprague, Portland, Me.  
 211 *Canada*
- 212- Arthur A. Lyness, Towson, Md.  
 214 *Palestine: One Year of Postal History, Sept. 1920 to Sept. 1921*  
*Details of the four overprints done at the Greek Orthodox Convent in Jerusalem.*

- 215- John B. Whalen, Bowie, Md.  
 218 *Jamaica: Postal History to 1860*  
*Selected pages showing early handstamps & British postage stamps used in Jamaica.*
- 219- Vice-Admiral George C. Dyer,  
 226 Annapolis, Md.  
*Straits Settlements, The First Hundred Years*  
*Pre-stamp era, India used in Malacca, Penang & Singapore, and Straits 1876-1946.*
- 227- W. J. Banks, Toronto, Canada  
 229 *Scotland: Postal History*  
*Selection of handstamps on pre-adhesive mail, including Edinburgh date & paid stamps, provisional name & paid stamps, uniform rates, local posts, ship letters and miscellaneous marks.*

#### V LATIN AMERICA

- 230- F. Burton Sellers,  
 235 Tarrytown, N.Y.  
*Haiti & The HAPAG*  
*Comprehensive study of the Hamburg-American Paqueboat Service in Haiti, including all cancellation varieties, multiple pieces, rare covers, HAPAG stamps, and collateral material.*
- 236- Arq. Isaac Backal,  
 239 Mexico, D.F.  
*APAM, A Postal District of Old Mexico*  
*A study of the stamps of Mexico including covers and errors.*

240- Arq. Isaac Backal,  
242 Mexico, D.F.  
*Provisional Issues of Guad-  
alajara*  
*The stamps of an interesting*  
*district of Mexico, with cancel-  
lations and varieties.*

243- Ing. David Warman,  
245 Mexico, D.F.  
*The Overprints of the Mexican*  
*Revolution*  
*A study of the varieties of the*  
*of the overprints "Obregon",*  
*"Villa", and "Carranza" applied*  
*during 1914 & 1915 to the stamps*  
*issued to commemorate the centen-*  
*ary of independence in 1910.*

## VI INDEPENDENT COUNTRIES: REST OF THE WORLD

246- Ellery Denison, Takoma Park,  
251 Md.  
*China - Development and Exp-  
ansion of China to Aerial*  
*Service.*

252- J. King Horner, Baltimore, Md.  
256 Shanghai  
*Large Dragons specialized*  
*according to settings and*  
*printings, including the Thorn-*  
*hill Collection, with the six*  
*candareen error, 1873-75 red*  
*surcharges, and 1893 surcharges.*

257- Bernard E. Stoloff, Havertown,  
258 Pa.  
*Chinese Imperial Post Issue*

259- Allen D. Kerr, Silver Spring,  
260 Md.  
*Silver Currency Issues of China*  
*Overprints & local overprints*  
*of the inflation period.*

261- Mrs. L. S. Daubert, Toronto,  
264 Canada  
*Icelandic Stamps: A Diversity*  
*of Cancellations.*

265- Allen D. Kerr, Silver Spring,  
268 Md.  
*Laos: First Issues*  
*Stamps, first day covers, color*  
*proofs, deluxe sheets and art-*  
*ist's proofs.*

## VII AIRMAILS: U.S. & FOREIGN

269- William R. Channels, Vineland,  
271 N.J.  
*Flying The Mail*  
*Story of the U.S. Airmail*  
*Service told through mint*  
*stamps and covers.*

273- Gerhard S. Wolff, Kensington,  
287 Md.  
*A Zeppelin Collection*  
*Complete issue of Zeppelin*  
*stamps with flown covers from*  
*over 60 countries and coll-*  
*ateral materials covering*  
*1900-1970.*

288- Dr. Max Kronstein, New York, N.Y.  
290 *35th Anniversary of the*

288- Dr. Max Kronstein, New York, N.Y.  
290 *35th Anniversary of the First*  
*International Rocket Flights*  
*Between the U.S.A. and Mexico*  
*(July 2, 1936)*  
*Complete collection of all*  
*printing steps, vignettes (inc-*  
*cluding errors), mint and on*  
*flown covers, all signed by*  
*the officers of the organiz-*  
*ing group.*

VIIIA TOPICALS:THEMATIC

- 291- Gregorio Gutierrez,  
295 Mexico,D.F.  
*"Art,Color & Philately"*  
*Selected pages of the*  
*five chapters of the*  
*collection.*
- 296- Dr. William Solyom-Fekete,  
304 Oxon Hill,Md.  
*Hungary On Foreign Stamps*  
*Stamps issued outside Hung-*  
*ary which are related to*  
*Hungary or Hungarians by*  
*their subject,design or de-*  
*signer.*
- 305- Isaac Gutman Chayet,  
309 Mexico,D.F.  
*History of Paintings Through*  
*Philately*  
*Includes errors,freaks,color*  
*proofs,first day covers,max-*  
*imum cards,and artist's proofs.*
- 310- Robert S. Oesch,Los Angeles,  
315 Cal.  
*Mexican Architecture & Its Art*  
*Traces origin and style of the*  
*architecture and decoration*  
*found in Mexico from the 3rd*  
*century B.C. through the latest*  
*modern,including the Mayan*  
*culture.*
- 316- Ronald S. Thomas,Bethesda,Md.  
320 *A History of European Literat-*  
*ure Philatelically Illustrated*  
*Stamps which depict a chronol-*  
*ogical history of European lit-*  
*erature from the Bible to the*  
*20th Century.*

- 321- Juan Torras Seger,  
324 Mexico,D.F.  
*The Spanish Cultut=*
- 321- Juan Torras Seger,  
324 Mexico,D.F.  
*The Spanish Cultural Her-*  
*itage in Mexico*  
*A showing of the culture*  
*transmitted to Mexico by*  
*Spain.*
- 325- D.H. Helfrich,Annapolis,Md.  
327 *Marian Shrines Around The*  
*World*  
*Stamps and covers depicting*  
*many shrines dedicated to Mary,*  
*The Mother of God.*
- 328- Emilio Obregon,Mexico,D.F.  
334 *The Theatrical Phenomena in*  
*Philately*  
*Selected pages from Thespis*  
*to "OH Calcutta!" and from*  
*Penny Black to the "Conquest*  
*of the Moon" stamps.*
- 335- Celedonio Sainz,Mexico,D.F.  
338 *Space Conquest*  
*From mythology to the arrival*  
*of the first man to the moon.*

VIIIB TOPICAL:PURPOSE OF ISSUE

- 339- Chris Norgard,Los Angeles,  
342 Cal.  
*Postal History of the Olympic*  
*Games:1896-1952*  
*Comprising stamps,proofs,var-*  
*ieties,covers,cancels,postal*  
*stationery,autographs,and*  
*official vignettes.*

343- Maurice Messoulam, Mexico, D.F.  
350 *XLX*

*XIX Olympic Games of Mexico,  
1968  
Part of a collection which in-  
cludes blocks of four, world  
issues, color proofs, designer's  
drawings, varieties, etc.*

351- Herman J. Lichty, Washington,  
353 D.C.

*Freedom From Hungar Through  
Postage Stamps  
All of the postage stamps issued  
by members of the United Nations  
to publicize the Food & Agricult-  
ure Organization's campaign of  
Freedom From Hunger.*

VIIIc TOPICAL:SUBJECT

354- David M. Pritchard, Jr.,  
356 Ft. Thomas, Ky.

*Selected Pages of Eisenhower  
Stamps and Covers  
Covers and stamps, foreign &  
domestic, honoring and commem-  
orating President Eisenhower.*

357- Brian V. Frankel, Westbury,  
362 N.Y.

*EISENHOWER  
An accumulation of "Ike" stamps,  
first day covers, and other cov-  
ers pertaining to "Ike".*

363- Dr. Carlos Casali, Mexico, D.F.  
366 *Pre-Columbian Monuments In  
America*

*Selected pages from a complete  
reference work on pre-Columbian  
monuments, ceramics and artifacts  
in America.*

367- Miss Margaret T. Ringler,  
369 Albany, N.Y.

*A Collection Honoring Dwight  
D. Eisenhower  
The exhibit presents, in a phil-  
atelic manner, phases of the life  
of Dwight D. Eisenhower.*

370- Irving Weinberg, Philadelphia,  
372 P.A.

370- Irving Weinberg, Philadelphia,  
372 Pa.

*The Lincoln Encyclopedia  
An explanation of philatelic  
terms using stamps & covers  
featuring Abraham Lincoln.*

373- Pedro D. Sarmiento,  
374 Oxon Hill, Md.

*General MacArthur's Story  
Life story of Gen. Mac Arthur  
on covers, including first day  
covers.*

375- Robert E. Herman, Rockville,  
376 Md.

*Philatelic Glossary of Minerals  
Stamps depicting different min-  
erals with a description, use, &  
production data. As many count-  
ries as possible are represented.*

377- Lillian S. Daubert, Toronto,  
380 Canada

*Posthorns  
The development of a postal  
symbol, covers and stamps, 1696-  
1970.*

381- Herman J. Lichty, Washington,  
383 D.C.

*George Washington Masonic  
Early U.S. mint blocks of George  
Washington and early Masonic can-  
cels on stamps of George Washing-  
ton.*



384- Robert F. Kan, Chevy Chase, Md.  
388 *Scouts On Stamps*  
*From Baden-Powell Cape of Good Hope to the 1971 World Jamboree with World Jamborees and Scouting commemorated by more than 50 countries.*

389- Isaac Gutman Chayet,  
394 Mexico, D.F.  
*Football In The World*  
*The sport seen through stamps with a highly topical focus.*

395- Anthony J. Quinn, Silver Spring,  
398 Md.  
*Soccer Stamps of The Americas*  
*Stamps, covers, errors, etc., depicting football (soccer) issued by the countries of South and Central America, and the Caribbean Islands.*

399- Gordon Sprague, Portland, Me.  
401 *Religion On Stamps*  
*Religion on stamps on printed pages.*

#### VIIID TOPICALS: OF A SINGLE COUNTRY

402- Barbara T. Williams, Reseda,  
403 Cal.  
*Monte Carlo Motor Car Rally*  
*History of the rally as shown philatelically including artist's proofs, color proofs, etc.*

#### IX OTHER SPECIALITIES

404- George B. Griffenhagen,  
405 Vienna, Va.  
*Pharmaceutical Fiscals*  
*Medicine tax stamps worldwide, commencing with the first medicine tax instituted in Great Britain in 1783, to those in use today.*

406- Gary G. Flatow, Ashville,  
408 N.C.  
*U.S. Telegraph Issues*  
*A selection of U.S. telegraph stamps, essays, telegrams, describing the history of the telegraphic system and companies.*

-end of frames-

*New Issues of the World*

EMPHASIS ON THE ISLANDS OF THE EAST  
SPECIALIST COVERAGE OF JAPAN

**BOOTH 14**

**FRANK J. HERMANN**  
POST OFFICE BOX 327 - ANNANDALE, VIRGINIA 22003

*Member: American Stamp Dealers' Association, American Philatelic Society*

...Of Special Interest

#### POST OFFICE DEPARTMENT

By courtesy of the Post Office Department, a special post office station has been established for *NAPEX* with a supply of commemorative stamps and a special canceller reading "*Napex Exhibition Sta.*" This station will be open during the hours of the show on all three days. The P.O.D. Station is located in the rear of the Diplomat Room.

#### UNITED NATIONS SALES AGENCY

By courtesy of the United Nations Postal Administration, a desk for sales of recent and available paper and stamps will be available during the hours of the show in the rear of the the Diplomat Room.

#### BUREAU OF ENGRAVING AND PRINTING

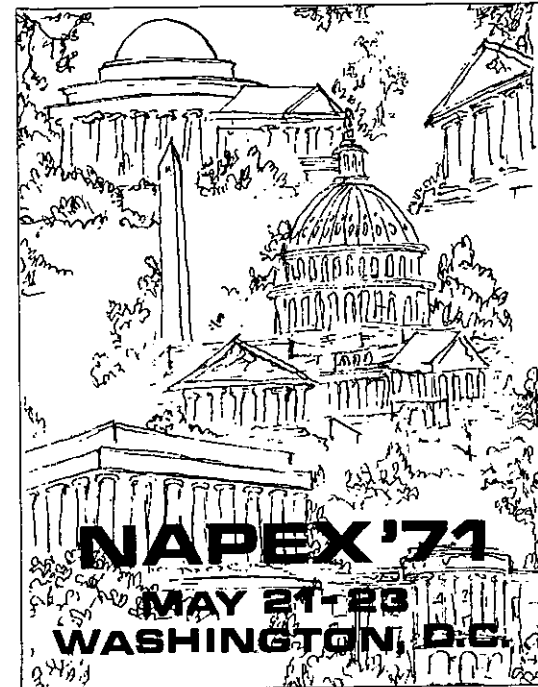
By courtesy of the Bureau, a display of engraving & printing productus will be on display at a booth in the front of the Diplomat Room. A special *NAPEX* sheetlet will be on sale to the public.

#### THE CROWN AGENTS

By courtesy of the Crown Agents, a special display of the stamps they distribute for the British Commonwealth countries will be on display in a booth at the front of the Dipolmat Room.

#### PHILATELIC SALES UNIT

By courtesy of the Philatelic Sales Unit, Washington Post Office, special displays will be arranged in various places in the exhibition halls, most being in the Diplomat Room



#### CACHET

A cacheted envelope will be available as a souvenir of *NAPEX* 1971. It will be on sale at the registration desk located in the hotel lobby.

## THE BOURSE

### Booth No.

1. Raymond Snitow & Michael Lifrieri,  
Beechurst, New York
2. Coin & Stamp Corner, Inc., Milburn, N.J.
3. American Eastern Stamp Company,  
Baltimore, Maryland
4. Matthew Bennett, Baltimore, Maryland
5. Simmy's Stamp Co., Inc., Boston, Mass.
6. Henry E. Graetz, Kansas City, Mo.
7. Hoffer's Stamps and Antiques,  
Cornwall, New York
8. Martin A. Armstrong and Co., Inc.,  
Maple Shade, New Jersey
9. William A. Fox, Short Hills, N.J.
10. New England Stamp Co., Boston, Mass.
11. Phoenix Stamps, Providence, R. I.
12. Gerald Robert, Montreal, Canada
13. Ed Ross & Don Toner Associates,  
Kansas City, Missouri
14. Frank J. Hermann, Annandale, Virginia
15. The Clearing House for Stamps,  
New York, N.Y.
16. Stanley P. Rumont, Alexandria, Virginia
17. The Saturday Shop, Alexandria, Virginia
18. Carl and Roy, Baltimore, Maryland
19. Herman D. Most, Rockville, Maryland
20. The Stamp Mart, Wilkes-Barre, Pa.
21. Alan Faden, Philadelphia, Pa.
22. Roiton Stamps, Dover, New Hampshire
23. Gregg Manning, Livingston, New Jersey
24. Richard J. Nemetz, Luzerne, Pa.
25. Dr. Edward D. Mueller, Englewood  
Cliffs, New Jersey
26. Robert H. Miller, Chambersburg, Pa.
27. Henry M. Spelman, III, Lexington, Mass.
28. Kenneth L. Rice, West Palm Beach, Fla.
29. Mr. & Mrs. Marden F. Ross, Oakdale, Cal.

**DO YOU PURCHASE  
STAMPS THROUGH AUCTIONS?**

You should definitely consider bidding in Public Auctions ("Where mail bids are accepted and handled properly"). We feel you will obtain better quality material at substantially lower prices than purchasing from a retailer dealer.

Consider auctions just a few times; try bidding in our next sale. We handle U.S., Foreign stamps, and covers. Our sales list generally from 1500 to 2000 lots of mint and used stamps selling from \$5 to \$100 (average price range). Of course, we have several over \$100 and scarce freaks, errors of U.S. issues better grade Foreign. (Western Europe mainly).

Just send a postcard for a copy of our next auction catalog. Ask to see A Free Copy of our New Booklet "THE INTELLIGENT WAY TO BUY & SELL VALUABLE PHILATELIC PROPERTIES."

**SIMMY'S STAMP CO. INC.**  
40 COURT STREET  
BOSTON, MASS. 02108  
PHONE 227-2770

ASDA APS SPA BIA AFDCS

### HOFFER'S STAMPS & ANTIQUES

P. O. BOX H, CHERRY HILL RD.

CORNWALL, NEW YORK 12581

(914) 534-8787

MEMBER: ASDA, APS, SPA, USPS

75,000 PICTURE POSTCARDS ASSORTED BY TOPICS

MOSTLY COVERS-BUT ALSO STAMPS  
ALL TYPES OF POSTAL STATIONERY

NAPEX BOOTH 7



Join "The Friendly One!"

SOCIETY OF PHILATELIC AMERICANS

NAPEX - National Philatelic Exhibitions of Washington, D.C., Inc., would be meaningless if it was not made up by many devoted workers, clubs, and friends. We dedicate NAPEX 1971 to the memory of two such devoted people:

PAUL AND ANNA PLANT

We will always remember them for the many things that they did over the years to make philately in the nation's capital the splendid thing that it is. In a sense, these two people and NAPEX are one and the same.

The NAPEX Board  
and Committee

S.P.A. Brings Your Hobby To You - No Matter Where You Live.  
STAMP CLUBS AND STUDY GROUPS - WRITE FOR DETAILS OF S.P.A. BRANCH AFFILIATION. USE OUR CIRCUITS, SLIDE SHOWS WITH SOUND TRACKS TO ENLIVEN MEETINGS, INCREASE ATTENDANCE!

STEWART T. BAILEY, EXECUTIVE SECRETARY  
P.O. BOX 9086 CINCINNATI, OHIO 45209

**S.P.A. Monthly Journal**  
Multi-prize-winner in international exhibitions. Thorough articles on all philatelic subjects.

★  
Great Expertizing and Translation Services for Members.

★  
Big popular sales circuits that are showing real growth. Buy or sell stamps in this proven medium.

★  
**Annual Conventions:**  
Next - Cincinnati, Ohio  
Aug. 27, 28 and 29, 1971  
Netherlands Hilton Hotel

★  
**Spring Meetings:**  
Next - Washington, D.C.  
Shoreham Hotel, with  
NAPEX, May 21-23, 1971

Mail This Coupon and Dues for Month in Which Application is Filed to:

SCHEDULE OF FEES	
Applications Made In:	Remit
January, February, March	.....\$4.00
April, May, June	..... 3.00
July, August, September	..... 3.00
October, November, December	..... 5.00

THE SOCIETY OF PHILATELIC AMERICANS  
Stewart T. Bailey, Executive Secy.  
P. O. Box 9086  
Cincinnati, Ohio 45209

NAME .....

ADDRESS .....

CITY ..... STATE ..... ZIP .....

BIRTH YEAR ..... COLLECTING INTERESTS .....

REFERENCES 1 .....

2 .....

3 .....

Have you ever been refused membership in another society? .....

If so, why? .....

**NAPEX 1971**  
Society of Philatelic Americans

Addendum Sheet - Napex Catalogue

Judge - Joseph D. Hahn, State College, Pa.  
(replaces James Beal because of  
illness)

Awards-Additional: SPA President's Award  
(Reserve Grand Award)

Bourse Dealers-(Replacements)

#12 Norman Messer, Chicago, Ill.  
(replaces Roberts, Montreal)

#22 Stamp City, Inc., New York City  
(replaces Roiton, Dover, N.H.)

Sale Items At Registration Desk:

Napex Exhibition Catalogue 25¢  
Napex Cachet Envelopes @ 2/ 25¢  
Napex Serviced Cachet Env-  
elopes, station/cancel, 3 days  
(available on Sunday) @3/\$1.00  
Napex Official F.D. Cover Env. @2/25¢  
NAPEX F.D. Covers (serviced) 50¢  
Official F.D. (Cover) Program \$1.00  
NAPEX Souvenir Ashtray, Banquet  
Favor (available Sunday) \$2.00

Awards Banquet

Saturday, May 22, 7:P.M., preceded by  
cash bar, 6:P.M., Paladian Room  
Tickets on Sale at Registration Desk

Bourse Dealers

All official bourse dealers connected  
with NAPEX are located in the Ambass-  
ador Room.

Special Activities

See Program Catalogue